



the BEACHPLUM SAMPLER

The Newsletter of the Beachplum Quilters of the Jersey Shore



Volume 32 Issue 6 February 2018

Celebrating Our 32nd Year 1985-2017

N.Q.A. N.J. Chapter #321

President's Message

Hello Beachplum Quilters,
As we are getting closer to our quilt show, I am feeling more confident that we will have a terrific display of quilted items from talented members. Kathleen and Sue have been doing an extraordinary job organizing the various elements of our show, too. Keep working to the finish line, everyone!

I just sent out the P.R. letter and flyer to various media outlets, quilt shops, and guilds. Please help to spread the word about our quilt show to your community bulletin boards, friends, families, and places of business. Keep selling tickets for our raffle quilt.

I'm very happy that Joyce Hughes is coming to our February Meeting, 2/16/18. If you are not able to come to her workshop the next day, she will be at the Mancuso show giving a full day workshop, Friday, April 27, 9 AM - 4 PM. Sign up at www.quiltfest.com.

January's meeting was well attended by 50 members and 2 guests. Last January's attendance was 41+2.

Happy Birthday to our February members: Kristen A, Ann B, Eileen B, Donna L, Jeannette M, Shirley M, Lainie M, and Janice W. Blessings for continued good health in this next year.

(Continued on page 5)

Inside This Issue

President's Message, Calendar	1
Minutes	2
Show & Tell	3-4
Programs	5
Quilt Show	6-9
Block of the Month, Charity Quilts, Classifieds	10
Refreshments, Committees, Ads	11

Meetings/Events Calendar 2017- 2018

- Sep 15—Pizza Party, Lecture by Karen Dever "Documentation & Value of Quilts"
- Oct 20— Lecture by Janellea Macbeth, "ScrapStashtic" Scrap System
- Nov 17—Make 'N Take Hanging Wall/Door Santa
- Dec 15—Cancelled due to weather
- Jan 19, 2018—QUILTO
- Feb 16—Lecture by Joyce Hughes, "My Journey into Quilting"
- Feb. 17—Workshop: Basic Thread Painting of Poppy
- Mar 16—Meeting devoted to April's Quilt Show
- April 14-15—Quilt Show
- April—No scheduled meeting
- May 20—Quilt Show "Show & Tell"
- May 19—Workshop by Linda A on Judy Neimeyer technique
- Jun 16—Installation of Officers, Pot Luck Dinner, Group Photo, Quilting Charades

Minutes of January 19, 2018 Meeting

Meeting was called to order at 6:30 pm by President, Laurie S. Members and guests (Nancy L., and Ann B.'s mother, Doris) were welcomed. Quilt Show registration cards and story card forms available. Information on free eye screening available courtesy of Sue B. **Workshops:** Sign-up sheet for "Basic Thread Painting" workshop by Joyce Hughes on Saturday, February 17th. The pattern is Poppies. Mettler threads are preferred and will be on sale if you need them. Class fee - \$25 and kit fee - \$15. Future workshop by Linda Applegate in May- details to follow. Kim G. donated felt for Santa's beard (November project). **Quilt Block Attendance Card** – Road to Oklahoma block was chosen for this month. Dakota Star block was also available for the cancelled December meeting.

Motion made to approve **minutes** from November meeting by Dona S. Seconded by Lorraine H. Passed.

Treasurer's Report (Ann B.) – Beginning balance - \$9368.76. Total receipts - \$370.09. Total expenses - \$371.84. Ending balance - \$9367.01. Motion made to approve report by Dona S. Seconded by Sharon M. Passed.

Charity Quilts (Pat T./Jeannette M.) – Next Sit and Sew will be held March 10th from 10-4 at the Methodist Church. Thank you letter received from Oceans of Love for donated quilt.

Block of the Month (Mary Lou G./Pat McC.) – Three new patterns are on website – March to June plus another butterfly pattern.

Mini Quilt Auction (Liz H.) – Still accepting mini quilts for the show. 32 received to date. Liz will be stepping down as chair and will mentor any member who is interested.

Challenge Quilt (Deb P./Kim G.) – Rules published in January newsletter. Don't forget to provide a photo and complete registration form, story card as well as index card that was included in your packet. **Country Store** (Kristen A.) – Still accepting fabric donations of all types.

Raffle Tickets (Pat L.) – \$385 in raffle sales turned in this evening. Sign up for Mancuso Show April 26-29 in Edison, NJ. Sunday's volunteers will pull the winning ticket for the Quilt. Details on "how to" will be provided.

Quilt Show 2018 (Kathleen C./Sue B.) – All is going well. Looking for volunteers to fill various jobs at show (covering vendors during breaks – see Dina N.). Two volunteers are needed to register quilts on Wednesday, April 11th. Facebook page created to advertise quilt show and promote membership.

Quilt Show Demonstrations (Paula P.) – If you are interested in demonstrating a quilting technique at the show, please sign up with date and time you prefer.

Baskets (Gloria S.) – Please bring in donations for baskets. Themes: Women's Accessories, Liquor and Chocolate, Baby, Garden, Coffee and Tea, Italian, Quilting. Monetary donations also accepted. Richard H. will be donating a sewing caddie for raffle.

Door Prizes (Diane C.) – Won by Ellen H., Lainie M., Paula P., Joyce W., Joann McC., Janet P., MaryLou G., Dona S., Ann B., Sharon M. and Lorraine H.

Show and Tell (Sherise B.) – Many beautiful quilts were displayed by our talented members.

Program (Gloria S.) – Members played QUILTO. Many prizes were won!

Meeting adjourned at 9:00 pm.

Respectfully submitted by:

Kim Gimblette, Recording Secretary (with thanks to Deb Perks for taking the minutes)

Show & Tell January 2018

- Kathleen C—Pinwheels for Willa Anne
- Joyce W—Three quilts for small quilt auction
- Mary Lou G—Charity quilt
- Jo Ann McC—Table runner grab bag made by Rita R
- Rita R—Two table runner grab bags made by Liz H
- Janet P—Four charity quilts
- Debbie P—Make and take Santa wall hanging
- Jane S—Multicolor batiks wall hanging
- Connie S—Placemats, stack 'n whack
- Ann B—3-D radiant star
- Nancy W—Rose garden, hand me down rose squares
- Valarie C—Scrap quilt for donation, boy theme 2
- Mary G—Queen size quilt
- Jeannette M—Table runner

Kathleen



Joyce



Mary Lou



Jo Ann



Rita



Show & Tell January 2018 (cont)

Janet



Debbie



Jane



Connie



Ann



Valarie



Nancy



Mary

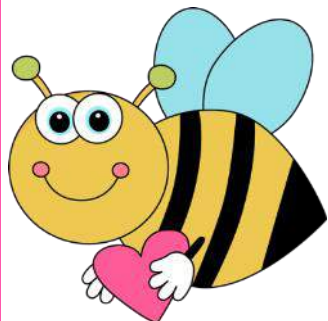


Jeanette



HAPPY VALENTINE'S DAY!

PROGRAMS



FEBRUARY: Joyce Hughes will speak on "My Journey into Quilting" and we be treated with a workshop on Thread Painting of Poppies.

MARCH: There will not be any scheduled program, this meeting will be dedicated to our upcoming Quilt Show in April.

APRIL: Quilt Show (no meeting will be scheduled).

MAY: In lieu of the regular "Show & Tell" we'll be having all of our members who entered their fabulous quilts at the Quilt Show. Displayed will be Best in Show, Judges Choice, 1st, 2nd & 3rd place. Members will give a brief description on what inspired them. We also welcome all the entries shown as a whole so that all the beautiful quilts can be viewed by all of our Members.

Linda A: Will be doing a workshop on the Judy Niemeyer paper piecing technique on Saturday, May 19, 2018. Additional information to follow and picture of placement. I'm anticipating this will be a GREAT workshop for all of us.

June: We'll celebrate with our pot luck dinner, group photo and installation of officers. We'll finish the year with Charades and the winning team will win prizes.

Submitted by,

Gloria Squicciarini

President's Message (continued from front page)

Remember to consider stepping up to the commitment of serving your guild as Board members step down. See me at the February meeting or send me an email message if you want to join the ballot. We need your help to continue to offer wonderful programs to our members.

Vacancies: President, Vice President, Programs, Treasurer, Secretary, Webmaster, Fund Raising, P.R.

Happy Quilting!

Laurie VS



Valentine's Day with a quilter.

Quilt Show Committees

This is the current Quilt Show committee list. Please contact Kathleen Cox or Sue Bafle for any changes or additions to the committees. Committee sign up sheet will be on the front table at our February 2018 monthly meeting.

	Chairperson
Quilt Show Co-Chairs	Kathleen C Sue B
Admissions	Donna S
Ambience	Gloria S
Basket Raffle	Gloria S Erma H
Challenge	Debbie P Kim G
Country Store	Kristin A Sharon M Mary P Pat T
Door Prizes	Susan S Marlene S
New memberships	Paula P Marlene S

Quilt Show Committees (cont)

Judging & Scribes	Ellen H Kristin A Gloria S Susan S Rita R (quilt turner) Jo Ann M (quilt turner)
Story Cards	Ann B
Mini Quilt Auction	Ruth S Liz H
Photography	Laurie S
Publicity	Laurie S
Quilting Demo	Paula P
Raffle Quilt Marketing	Pat L

Quilt Show Committees (cont)

Raffle Quilt Tickets (ticket sale at show)	Lorraine H Kathy M Pat L
Registration	Kathy M
Setup, Breakdown & Storage	Cathy S Barbara E Joann M Connie S Barbara L Paula P Pru P
White gloves	Joyce W (helper) Barbara E Joann M
Charity quilt scrape book	Jeannette M
Vendors	Dina N

Quilt Show Committees (cont)

Viewers Choice	Debbie P Kim G
Show Insurance	Kathleen C Sue B

Quilt Challenge 2018

We are getting down to the wire, Challenge Quilts due at the March Meeting. Remember to bring your quilt in a pillow case with your contact information on the outside. Include inside the pillow case your registration form, picture, story card and index card filled out with the necessary information.

Looking forward to seeing everyone's creativity!

Any questions or concerns please contact Debbie P. or Kim G.

February's QUILTO



BLOCK OF THE MONTH



Charity Quilts (and more)

SIT and SEW

Saturday, March 10, 2018
10:00AM to 4:00PM
First United Methodist Church
129 Chestnut St
Toms River, NJ 08753

- Bring any project you want to work on or grab one of the prepared projects that will be supplied that day. You do not need to be working on a charity item to join us.
- Pat is going to make Paprika Chicken and I will bring tossed salad. Coffee, tea and water will be available. Somehow we always seem to have some special snacks to enjoy. Thanks to the people who bring them. You may of course bring your own lunch and snack.
- Pat delivered 10 quilts to Hope House this month. They were very glad to have them. In this weather we all know how wonderful it is to snuggle in a quilt.
- See you all soon,
- Happy quilting,
- Jeannette

Classifieds

Long arm quilting services - custom, semi-custom, and all over designs available. Every quilt or project will be given individual attention to highlight the design and shine! Call or email for additional information. Kristin Alfano 317-902-2034 or kalfano@mail.com

Juki machine and L'ill Gracie 2 - 8' quilting table for sale in mint new condition in Manahawkin. Used 3 times. Model # TL 98Q-an older model. Asking price reduced from \$850 to \$650. Contact Leslie Pascale at 609-548-2514. Includes bobbins, needles, pattern, original machine box, manual, factory CD

**THE BEACHPLUM QUILTERS
OF THE JERSEY SHORE, INC.**

P.O. Box 749

Island Heights, NJ 08732-0749

Meetings are held the 3rd Friday of
each month September through June at
the Presbyterian Church of Toms River,
1070 Hooper Avenue, Toms River, NJ 08753

DOORS OPEN AT 6 pm;

MEETING BEGINS AT 6:30 pm

www.beachplumquilters.org

E-mail: beachplumquiltmakers@gmail.com



Executive Board

- President**
Laurie Schnitzer
- Vice President**
Paula Patri
- Treasurer**
Ann Bergstedt
- Secretary**
Kim Gimblette

Crafty Fabrics

750 Mantoloking Rd., Brick, NJ 732-920-6220

Classes & Workshops available year round.

Tues-Fri 9:30a-4:00p Sat- 11:00a-4:00p

Tues & Wed 7 PM-9PM

www.craftyfabricsquilting.com

Diane@craftyfabricsquilting.com

10% discount to BPQ guild members!

Deadline for the next newsletter is

MARCH 4, 2018

E-Mail your news in a Word document
using Arial font to

Marcia_guza@yahoo.com

Our Committee Chairs:

Audit Committee

Paula Patri

Charity Quilts

Pat Toth

Jeannette Middlekauf

Communications

Joyce Weiss

Historian

Paula Patri

Hospitality

Mary Pabst

Membership

Marlene Stoever

Block of the Month

Mary Lou Gilbert

Pat McCullough

Door Prizes

Diane Colangelo

Programs

Gloria Squicciarini

Show & Tell

Sherise Buhagiar

2017 Event—Bus Trip

Gloria Squicciarini

2018 Quilt Show

Sue Balfe

Kathleen Cox

Newsletter Editor

Marcia Guza

Webmaster

Laurie Schnitzer

Fundraising

Pat Lundervold

NEXT MTG CHECKLIST

- Name tag and a welcome smile for guests
- Block of the Month
- Coffee mug, plate
- Show & Tell
- Assigned refreshments
- **Donations of feminine care products for the food pantry**

**Next BPQ Quilt Show
Date: April 14-15, 2018**

**FEBRUARY MEETING
REFRESHMENTS**



Coffee and tea will be provided.
Otherwise, bring your own beverage.

Assignments for refreshments are as follows:
A through E—please bring a dessert, fruit dish or nosh.

Everyone else can participate if desired. Please re-
member to bring your coffee mug, plate, utensils, etc.,
and to clean up your own dishes after the meeting.