



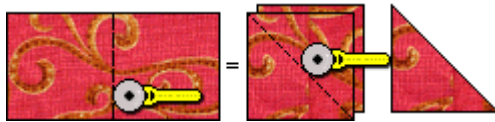
Cactus flower

This makes a 12" block, and we'll piece it the "old fashioned" way!



Please abide by the [Terms and Conditions of use!](#) :o)

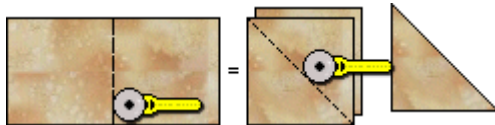
** Preparing the Pieces and Sewing the Block **



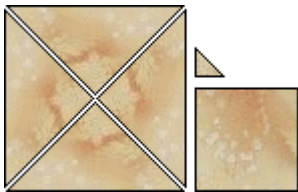
Start by marking and cutting the Color 1 $4\text{-}\frac{7}{8}$ " x $9\text{-}\frac{3}{4}$ " strip into two $4\text{-}\frac{7}{8}$ " squares. Stack these and cut once on the diagonal to make four half square triangles...



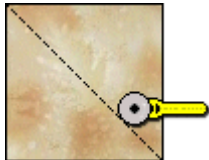
Now cut a Color 1 $11\text{-}\frac{7}{8}$ " x 2" strip, and a 2" x $5\frac{1}{2}$ " strip...



Then mark and cut the Color 2 $4\text{-}\frac{7}{8}$ " x $9\text{-}\frac{3}{4}$ " strip into two $4\text{-}\frac{7}{8}$ " squares. Stack these and cut once on the diagonal to make four half square triangles...



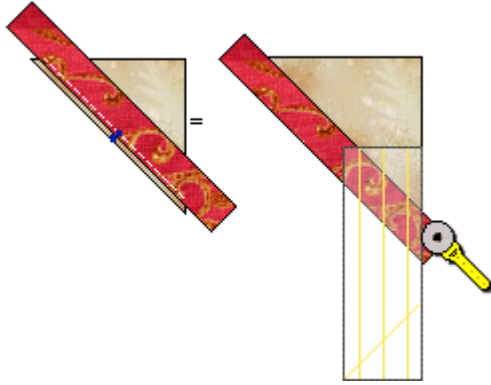
Cut one Color 2 $8\text{-}\frac{1}{4}$ " square. Cut this on each diagonal to make four quarter square triangles. You will only need two per block. Cut one Color 2 $4\frac{1}{2}$ " square. Cut one $2\text{-}\frac{1}{2}$ " square in half, and from that you need one triangle...



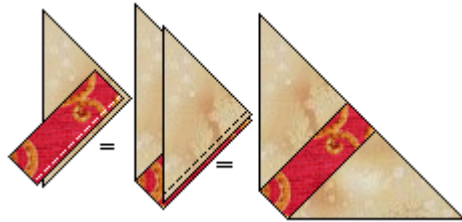
Cut one Color 2 $6\text{-}\frac{1}{2}$ " square and cut this in half once on the diagonal to make two half square triangles. You will only need one per block...

...on to [Page 2!](#)

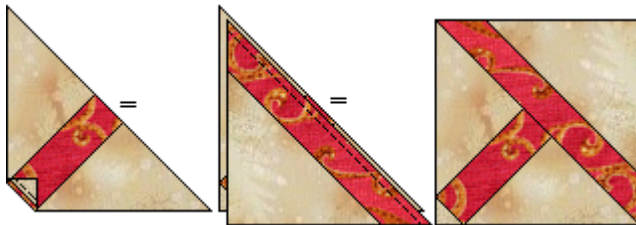
Cactus Flower - Page 2



Mark the half way point of the slant side of the 6 1/2" Color 2 triangle. Mark the half way point of the Color 1 11-7/8" x 2" strip. Matching these two half way points, sew these together, using a scant 1/4" seam. Using a ruler, chop off the Color 1 ends even with the sides of the triangle...



Now sew the shorter Color 1 strip between the two Color 2 quarter square triangles, again using scant 1/4' seams...



Then sew the small Color 2 triangle to the lower left corner. Now sew this half of the center block, to the large triangle-with-strip side...



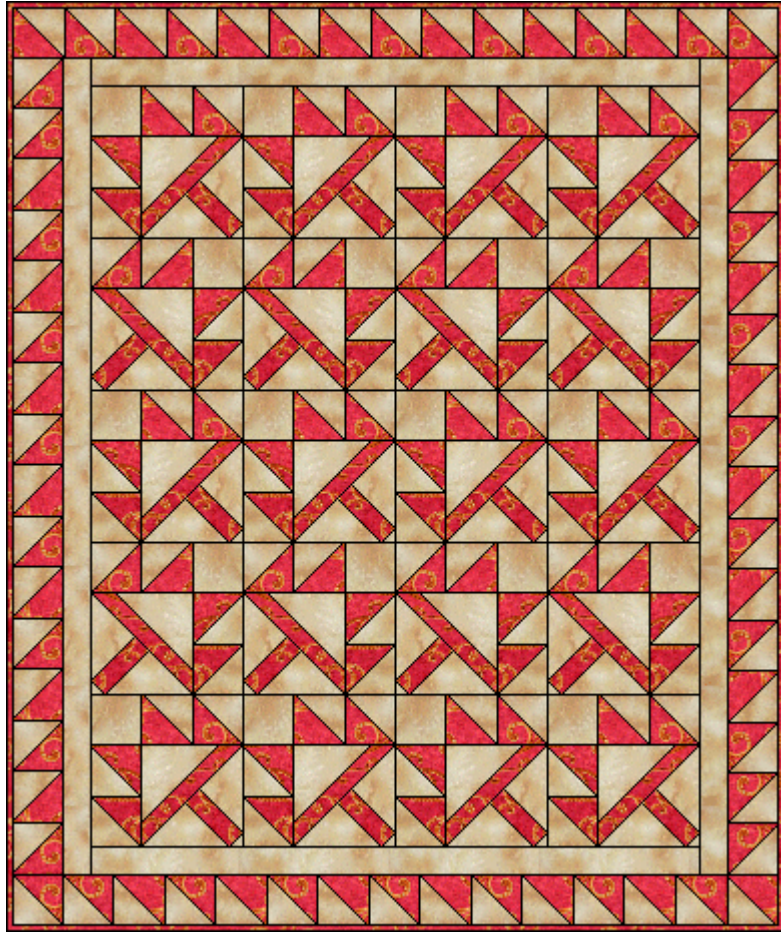
Row one of the block, is two half squares, and the Color 2 4- 1/2" square...



Row two is the center square we just pieced, sewn to a sewn together pair of half squares. Now just sew those rows together, and that's the block!

...on to Page 3!!

Cactus Flower - Page 3



Here's a
simple four
by five
block quilt,
with a half
square
border :o)

Happy
Quilting!!

Marcia
:o)

Here's
Lizzy's!

** Supplies List **



Color 1

Color 1 needs: one 4-7/8" x 9-3/4" strip AND one 11-7/8" x 2" strip, and one 2" x 5-1/2" strip...



Color 2

Color 2 needs: one 4-7/8" x 9-3/4" strip AND one 8-1/4" square AND one 4-1/2" square AND one 2-1/2" square

To the Patterns or The Quilter's Cache

©Dec 17 2001 Marcia Hohn



ITS AN MH PAPER

Page 1 Page 2

Traditional Block

<http://www.quilterscache.com>